



# St. Kitts & Nevis HEALTH AND TRAVEL PROTOCOLS



Updated May 11, 2021





# Are you heading to St. Kitts and Nevis?

Then check out our new travel protocols for safe entry and experience in our Twin Island Federation. In light of the dynamic nature of the COVID-19 pandemic, these protocols are likely to change. Travellers are encouraged to check [www.knatravelforms.kn](http://www.knatravelforms.kn) regularly for updates.

## PROTOCOLS SUMMARY

### A WELCOME TO OUR SHORES!

All in-bound travelers to the Federation will be classified as having some risk or **SIGNIFICANT** risk of exposure to the virus.

### B GENERAL REQUIREMENTS

1. **ALL** travellers are required to review the [www.knatravelform.kn](http://www.knatravelform.kn) website before travel.
2. Submission of **Customs, Border and Health Entry Form** found at [www.knatravelform.kn](http://www.knatravelform.kn).
3. Submission of **negative COVID-19 Reverse Transcription Polymerase Chain Reaction Laboratory Based Molecular Test (RT-PCR Test)** done on **a naso-pharyngeal swab** taken within 3 days of arrival at an accredited laboratory. **Rapid COVID-19 test results will not be accepted.**
4. Submission of accommodation/hotel reservation, which will be verified before approval is granted.
5. Fully vaccinated (2-week interval between last vaccine dose and expected date of travel) inbound travellers may qualify for reduced quarantine period of 9 days. **(See Vaccinated Travellers)**

### C TOURISTS/INTERNATIONAL REQUIREMENTS

1. Travellers will undergo focused health screening at the airport upon arrival.
2. Travellers must submit confirmation of hotel reservation at a COVID-19 certified Franchise/Branded hotel. **(List available inside)**
3. Travellers will require serial testing on days #7, #14 and before departure.



4. A negative RT-PCR test on day #7 allows access to COVID-19 approved tourist attraction sites in a secure bubble.
5. A negative RT-PCR test on day #14 (if still in the Federation) allows for integration into the society.
6. If vacation period is less than 14 days, the traveler must do an exit COVID-19 RT-PCR test at least two (2) days prior to departure.
7. Travellers will be required to use COVID-19 certified Taxis or Ground Transport for travel between the airport, hotel and approved tourist sites. Travellers en-route to Nevis will be transferred via covid-19 certified sea taxi. Each in-bound traveller must have appropriate cash to pay ground/sea transportation fee.

## **D** RETURNING NATIONALS, RESIDENTS & WORK PERMIT HOLDERS REQUIREMENTS

1. Travellers will undergo focused health screening at the airport upon arrival.
2. Nationals who are returning to the Federation and free of COVID-19 can stay at a certified hotels including OTI, Royal St. Kitts, Oualie Beach and Paradise Hotel and any of the four (4) franchise hotels. **(List available inside)**
3. Returning nationals and residents may also opt for pre-approved home quarantine and pay for security facility/fees.

## **E** IN-TRANSIT PASSENGER REQUIREMENTS

1. Travellers will undergo regular health screening at the airport upon arrival. Please have your negative COVID-19 RT-PCR test visible.
2. Masks must be worn in the airport at all times.
3. In- Transit Passengers will **NOT** be permitted to leave the airport after clearance by Immigration, Customs and Port Health Officials.
4. If you test positive for COVID-19 while in St. Kitts and Nevis, you will be required by the Ministry of Health to undergo a period of isolation at your own expense.



# COUNTRY RISK CATEGORIZATION AS OF NOVEMBER 3, 2020

All in-bound travelers to the Federation will be classified as having some risk or **SIGNIFICANT** risk of exposure to the virus.

## AREAS OF RISK



Please note that the country risk categorization will be reviewed regularly.

# BEFORE YOUR TRIP TO *St. Kitts and Nevis*



## 1 COMPLETE YOUR FORM

Complete and submit the **Customs, Border and Health Entry Form** found at <https://www.knatravelform.kn> with required details including evidence of a negative COVID-19 RT-PCR test.

## 2 TAKE YOUR TEST

A mandatory **negative** COVID-19 RT-PCR test is required for entry into the Federation. This test must be done within **3 days** of arrival at an accredited laboratory in the traveller's host country. **All** test results must be recorded in the **English** language. Children are required to submit a COVID-19 RT-PCR test for entry.

## 3 NEED SPECIAL ASSISTANCE?

Specific travellers with non-standard circumstances to be addressed are advised to contact the Covid-19 Taskforce via [covid19taskforce@gov.kn](mailto:covid19taskforce@gov.kn) at least **5 days** prior to travel to St. Kitts and Nevis to have their requests investigated and facilitated.

### ***Specific travellers include:***

- i. Diplomats
- ii. Persons with medical conditions warranting special considerations (to be certified by the Chief Medical Officer)
- iii. Persons with a disability or traveling with persons with disabilities
- iv. Children 18 yrs and under must be accompanied by an adult.



Remember to wear a mask on your flight!



UPON ARRIVAL

# IN-BOUND TRAVELLERS

The in-bound traveller in this category (including children) will be required to submit an entry form and a **negative COVID-19 Reverse Transcription Polymerase Chain Reaction Laboratory Based Molecular Test** (RT-PCR Test). The test sample must be taken within seventy-two (72) hours of travel at an Accredited Laboratory.

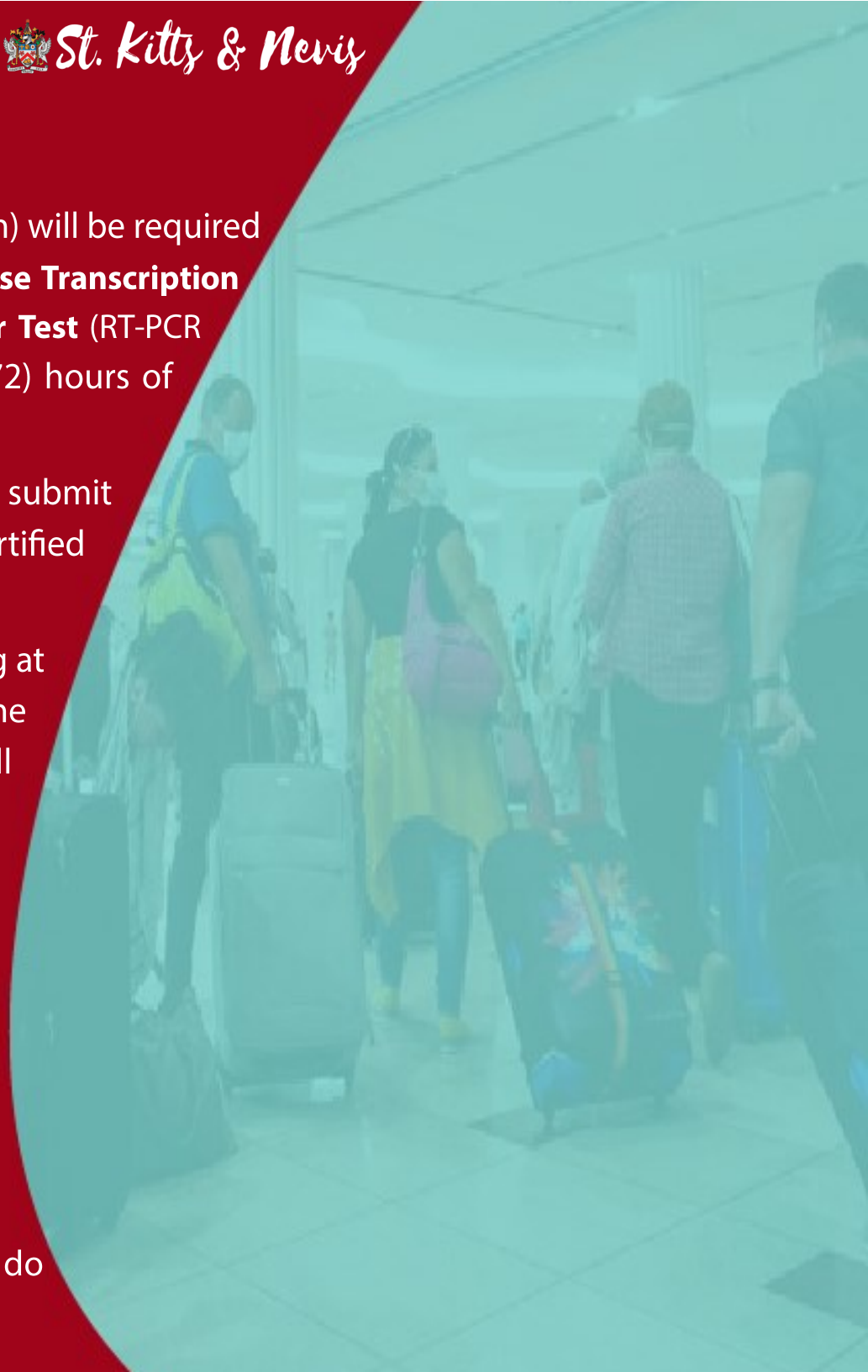
The in-bound tourist/ international traveller must submit confirmation of hotel reservation at a COVID-19 certified Franchise/Branded hotel. *(See 'Vacation-in-Place'Accommodations)*

The traveller will be required to undergo health screening at the airport and will be asked to download and install the SKN COVID-19 Mobile App (EXMAPP) via which you will be monitored for first 14 days.

If the tourist is asymptomatic (without COVID like symptoms) he or she will be allowed entry into the Federation.

In-bound international traveller/ tourists can **'Vacation -in-Place'** at their hotel with access to an approved package of services for the first fourteen (14) days or for the duration of stay (if shorter).

The international traveller / tourist will be required to do serial testing.



UPON ARRIVAL

# IN-BOUND TRAVELLERS

He or she will be tested on day # 7 and on day #14 (*if still in Federation*).

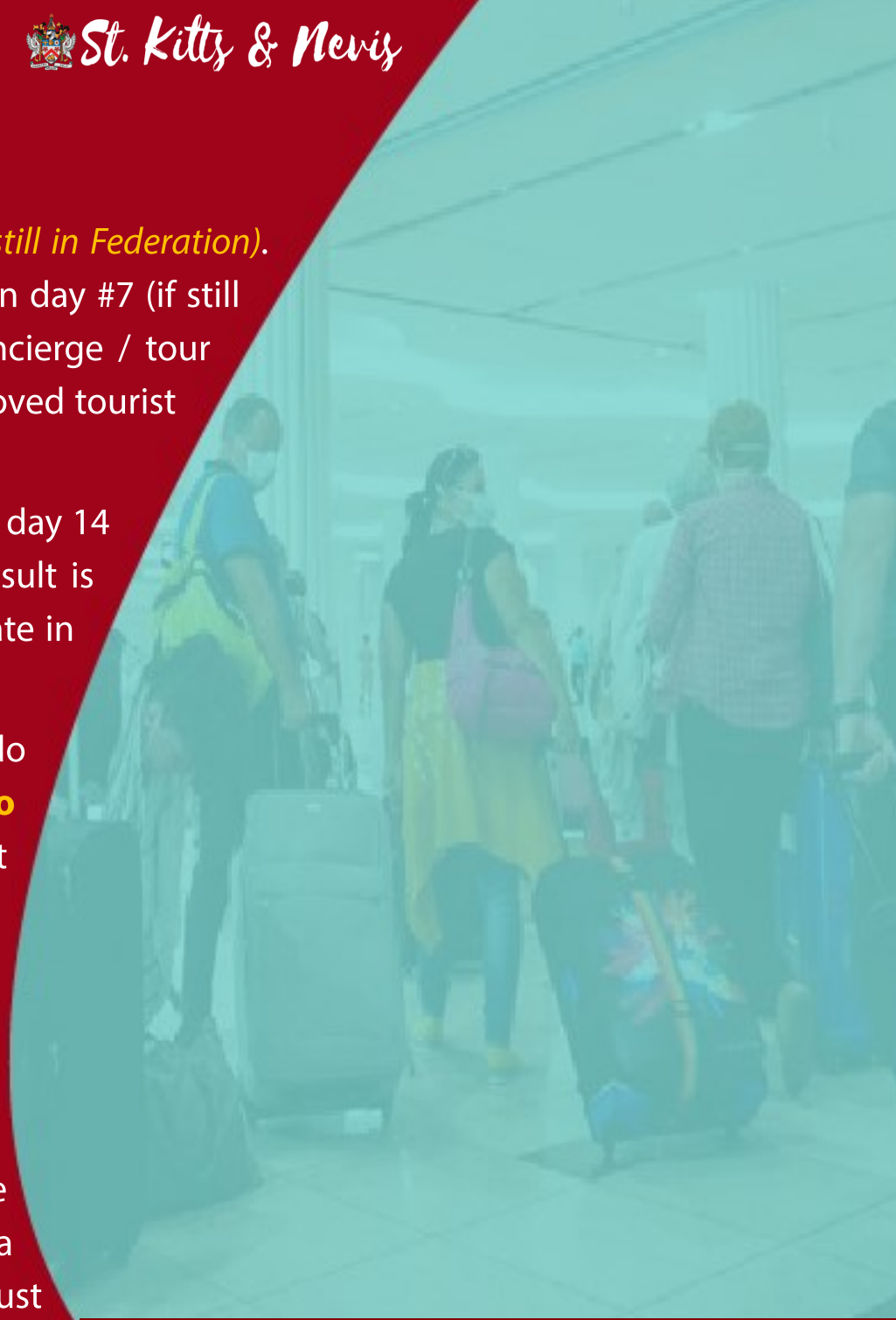
Anyone who is tested and receives a negative PCR test on day #7 (if still on island) can be allowed (only through the hotel's concierge / tour desk and by appointment only) access to COVID-19 approved tourist attraction sites on the island in a secure bubble.

All in-bound traveller & tourist must receive a PCR test on day 14 of stay or vacation (*if still in Federation*) and once the result is negative the traveller or tourist will be allowed to integrate in the society.

If the vacation period is 14 days or less, the traveler must do an **exit COVID-19 PCR test at least two (2) days prior to departure**. Each tourist must have a pre-departure/exit test from this destination.

Tourists & in-bound international travellers in this category can only use **COVID-19 Certified Taxis or Ground Transport** with appropriate partition to move between airport and hotel and to move between hotel and the COVID-19 approved tourist attraction sites on the islands. Travellers en-route to Nevis will be transferred via covid-19 certified sea taxi. Each in-bound traveller must have appropriate cash to pay ground/sea transportation fee.

The Ministry of Health reserves the right to require testing of any traveller to the Federation regardless of documentation presented or any other requirement, obligation or condition associated with their assigned risk category.



UPON ARRIVAL

# RETURNING NATIONALS

All returning nationals will be required to undergo health screening by Port Officers and is required to: wear mask and have their temperature tested.

Nationals who are returning to the Federation and are free of COVID-19 have the option to stay at specific COVID-19 Certified hotels. ***(See 'Vacation-in-Place'Accommodations)***

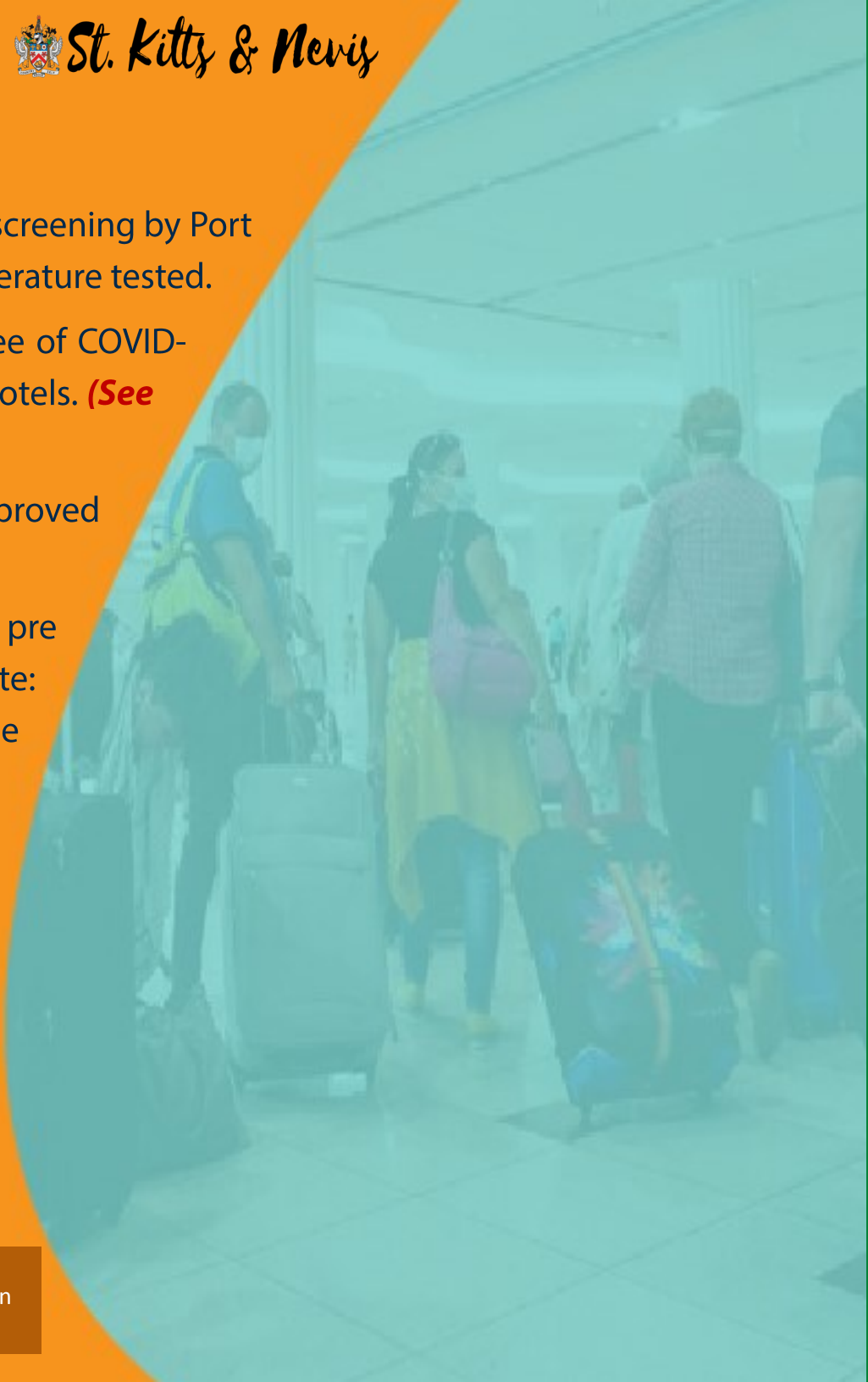
Returning nationals and residents may also opt for pre-approved home quarantine and pay for security facility/fees.

Interested returning nationals or residents may access the pre-approved option by visiting the following website: **[www.covid19.gov.kn](http://www.covid19.gov.kn)**. However, you would not be allowed to go to any private home until after 14 days.

Returning Nationals/Residents must receive a PCR test on day 14 of stay and once the result is negative the you will be allowed to integrate in the society.

**Returning nationals will not be allowed the self-quarantine option in their homes unless they employ at their expense, the services of private security.**

The Ministry of Health reserves the right to require testing of any traveller to the Federation regardless of documentation presented or any other requirement, obligation or condition associated with their assigned risk category.





## UPON ARRIVAL

# VACCINATED TRAVELLERS

These are Vaccination protocols regarding reduction in quarantine period for inbound travellers by air and travellers via yachts who are fully vaccinated with the following COVID -19 vaccines:

- **Pfizer/BioNTech,**
- **Moderna ,**
- **AstraZeneca / Oxford**
- **Jansen - Cilag 's Johnson & Johnson**

**Persons are considered fully vaccinated two weeks after having the second dose of a two dose vaccine and two weeks after having one dose of a single dose vaccine (Johnson & Johnson).**

**Requirements for fully vaccinated in- bound passengers are as follows:**

- Negative pre-arrival at RT - PCR test done within three days of travel to the Federation of St Kitts and Nevis. Fully vaccinated inbound passenger maybe tested on arrival if the Pre-arrival test is outdated or not-acceptable.
- Completion of entry form at [URL:knatravelform.kn](http://URL:knatravelform.kn).
- Quarantine / vacation in place for a period of **9 days** and can be officially released from quarantine if a negative RT - PCR test is returned on day #9 of quarantine.
- **A fully vaccinated traveller will forfeit this 9-day option if quarantining/vacationing-in-place (in the same hotel room) with another traveller who is not fully vaccinated.**

**These changes became effective on Saturday May 1, 2021.**

The Ministry of Health reserves the right to require testing of any traveller to the Federation regardless of documentation presented or any other requirement, obligation or condition associated with their assigned risk category.



UPON ARRIVAL

# IN-TRANSIT PASSENGERS

Before disembarking, have your COVID-19 RT-PCR test result (in English language) visible, if applicable. These results will be checked for validity.

Remember to wear your mask while at the airport.

All travellers must undergo a focused health screen at the airport.

In- Transit Passengers will **NOT** be permitted to leave the airport after clearance by Immigration, Customs and Port Health Officials.

If you test positive for COVID-19 while in St. Kitts and Nevis, you will be required by the Ministry of Health to undergo a period of isolation at your own expense, at one of the branded or franchise hotels. *(See 'Vacation-in-Place' Accommodations)*

Alternatively, if you have moderate to severe COVID -19 disease you will be transferred to the COVID -19 ward for isolation. Upon recovery, you may return to country of origin.

The Ministry of Health reserves the right to require testing of any traveller to the Federation regardless of documentation presented or any other requirement, obligation or condition associated with their assigned risk category.



# FLIGHT CREW PROTOCOLS

The local agents of commercial air carriers must provide the border agencies with the relevant data for the flight crew involved with flights with a layover.

Local agents of commercial air carriers must collaborate with Airport Authorities to provide a dedicated channel/ public health corridor for flight crew in clearing focused health screening, immigration and customs at the RLBIA.

The flight crew will be required to submit their **Crew COVID-19 Status Card** as prescribed by International Civil Aviation Organization and undergo focused health screening including temperature check at the Medical / Health screening Unit at RLBIA. If they are not exhibiting any symptoms they will be allowed to clear immigration and customs.

If any flight crew member is found to have COVID-19 like symptoms or if suspected to have COVID-19 they would be channeled to the testing booth in the isolation unit where a Naso-pharyngeal swab will be extracted from such a person and sent to the local laboratory for processing. The flight crew member will be evaluated and monitored in the isolation unit. The aircraft operator may medically repatriate crewmember to home base by appropriate modes.

**Flight crew members must wear face mask while in the Federation and must adhere to the physical & social distancing measures.** Flight crew members who are involved in flights with layover can only use COVID-19 certified ground transportation to and from the RLBIA.

Flight crew who are involved in flights with layover can only stay at one of the following accommodations:

- **Park Hyatt St. Kitts Christophe Harbour**
- **St. Kitts Marriott Resort Hotel & Marriott's St. Kitts Vacation Beach Club;**
- **Koi Resort St. Kitts**

Flight crew members who are part of layover flights can **only 'stay -in -place'** at the above stated accommodations. They can **only access services on the hotel property** and can only leave the hotel en-route to RLBIA for departure from the Federation.



# SEA VESSEL ENTRY

In-bound Travelers entering the Federation via sea vessels will be required to log onto the COVID-19 National website (URL: <https://www.knatravelform.kn>) before traveling.

Complete and submit the Customs, Border and Health entry form with required details including evidence of a **Negative COVID-19 PCR Test**.

The vessel will be required to dock at one of the following six (6) ports, submits the Maritime Declaration of Health to the Port Health Officer and interact with the other border agencies.

**The six Ports in the Federation are: Deep water Port, Port Zante, Christophe Harbour,, New Guinea (St. Kitts Marine Works), Charlestown Pier and Long Point Pier.**

In bound passengers who arrive via sea vessel will be classified as having significant risk to the virus and will be processed accordingly and will 'Vacation-in-Place' as outlined in the **'Vacation-in-Place' Accommodations**.

The prescribed quarantine time (14 days minus the transit time) will be determined by the transit time between last port of call and date of arrival into the Federation. The transit time must be supported by official documentation and the Sail Clear – Caribbean Advanced Notification System.

Yachts and pleasure vessels that are **≥ 60 feet** must quarantine at Christophe Harbor in St Kitts;

Yachts and pleasure vessels that are **< 60 Feet** must quarantine at the following sites:

- **Ballas Bay in St. Kitts;**
- **Pinney's Beach and Gallows in Nevis;**

**A fee will be charged to monitor yachts and pleasure vessels that are < 60 Feet that are in quarantine.**



# SEA VESSEL ENTRY

## 1 REQUIREMENTS FOR PROVISIONING A VESSEL

For vessels wishing to provision (replenish stock) in country please follow the requirements outlined below:

- a. A list of supplies must be forwarded online to the vessel agents.
- b. The agent is responsible for procuring, packaging and delivering the items to the port of entry in a designated area.
- c. The vessel is then responsible for providing workmen to collect the package from the designated area on the port.
- d. Proper personal protective equipment should be worn (disposable gloves, face masks/face shields) upon delivery and collection of package. All other COVID-19 protocols should be adhered to including physical distancing. Face-to-face interactions between crew and local attendants must be limited to one minute or less.

## 2 REQUIREMENTS FOR BUNKERING A VESSEL

For vessels wishing to bunker (refueling) in country, please follow the requirements outlined below:

- a. The procurement of the fuel must be completed online through the vessel agent.
  - b. Once procurement has been verified, the vessel will be allowed to berth (come alongside) and secure at the pier.
  - c. For large vessels, the tanker will come alongside and make connection for fuel transfer.
  - d. For smaller vessels, a local pump attendant will assist with the re-fueling. The crew members will remain onboard the vessel during the refueling process.
  - e. Proper personal protective equipment should be worn (disposable gloves, face masks/face shields) upon delivery and collection of package. All other COVID-19 protocols should be adhered to including physical distancing. Face-to-face interactions between crew and local attendants must be limited to one minute or less.



## 1 TESTING ON ARRIVAL

- a. All travellers are required to present a **negative** COVID-19 RT-PCR test, in order to enter the Federation. Such tests must be done within 72 hours of travel to the Federation.
- b. All tests must be done by a reputable **Accredited Laboratory** in the host country and must be the gold Standard RT-PCR test.
- c. If the Health Authorities have reasons to suspect that the laboratory is questionable, or the test is greater than 3 days old, fabricated or inadequate (rapid test, oral swab sample or not an RT-PCR Test), you will be required to be tested upon arrival.
- d. In-bound passengers who are exhibiting COVID-19 symptoms will be channeled to the testing booth where the appropriate sample (**a naso-pharyngeal swab**) will be taken and sent to the local laboratory for processing. The symptomatic traveler will then be asked to proceed to the isolation section of the air/ sea port prior to transfer to the COVID ward at the nearest hospital where they will receive clinical care.

## 2 SERIAL TESTING

- a. International travellers will be required to present a negative COVID-19 RT-PCR test done in their country of origin.
- b. If international travellers intend to remain in the Federation for 14 days or less, they will be required to do a pre-departure exit test.
- c. If on day 7, a test result is negative and again negative on day 14, that traveller or tourist will be able to freely integrate into the society.
- d. If the test is positive, that person will be diagnosed with COVID-19 and as such will be isolated and clinically managed.
- e. The COVID-19 PCR test is US\$ 100.00 for Nationals and US\$ 150.00 for non- nationals.



## ACCOMMODATIONS

1

### INTERNATIONAL TOURIST

COVID-19 certified, franchise/branded hotels including: Park Hyatt St. Kitts Christophe Harbour Hotel, Four Seasons Resort Nevis, St. Kitts Marriott Resort Hotel & Marriott's St. Kitts Vacation Beach Club, Royal St. Kitts Hotel, Koi Resort St. Kitts, Paradise Beach Nevis and Golden Rock Hotel.

*An international traveller will have at their disposal the approved packages of services offered by any of the franchise hotels.*

2

### RETURNING NATIONALS, RESIDENTS & WORK PERMIT HOLDERS

Pre-approved Private Homes and/or COVID-19 certified hotels including: Ocean Terrace Inn, the Royal St. Kitts Hotel, Bird Rock Apartment Complex, Ocean Edge, Oualie Beach Resort Hotel, Potworks and Paradise Beach.

Additionally, any of the four (4) franchise hotels: including: Park Hyatt St. Kitts Christophe Harbour Hotel, Four Seasons Resort Nevis, St. Kitts Marriott Resort Hotel & Marriott's St. Kitts Vacation Beach Club, and Koi Resort St. Kitts.



# APPROVAL FOR ENTRY INTO *St. Kitts and Nevis*

In-bound travelers will only be granted permission to enter the Federation if the following criteria are met:

- **Submit negative COVID-19 RT-PCR test result which will be verified.**
- **Submit reservation for appropriate accommodation which will be verified.**
- **Submit consent forms and End User Licensing Agreement (EULA) for the St. Kitts & Nevis COVID-19 Mobile App ( EXMAPP)**



*St. Kitts & Nevis*



# St. Kitts and Nevis



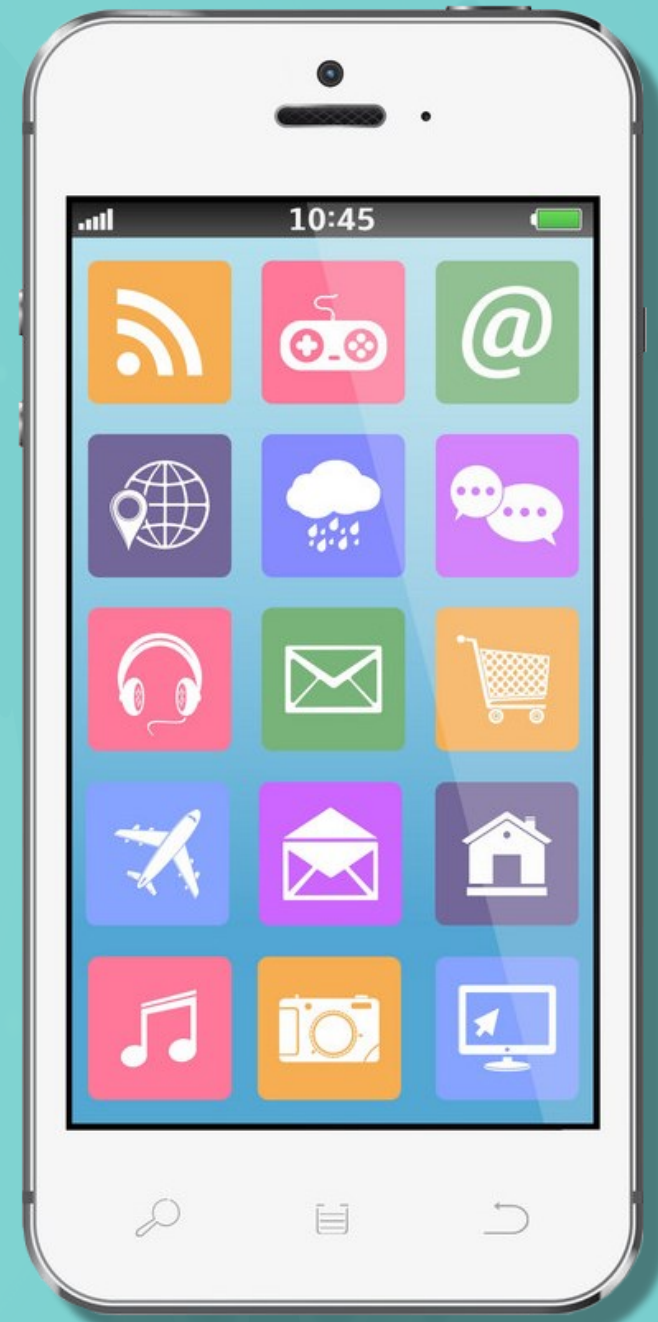
## COVID-19 MOBILE APP (EXMAPP)

The St. Kitts & Nevis COVID-19 Mobile App ( EXMAPP) is a clinical management tool that will be used to monitor the in-bound passenger for the first fourteen days or for the duration of stay (if less). The passenger is expected to use this mobile application to update the public health team regarding onset of any COVID-19 symptoms.

The public health team will utilize this mobile application to communicate with all inbound passengers during the first fourteen days or duration of stay (if less).

All in-bound passengers will be required to download and install the St. Kitts & Nevis COVID-19 Mobile App (EXMAPP).


**All in-bound passengers will be expected to have their mobile devices with them during this period of monitoring.**






FOR FURTHER INFORMATION:

 [www.knatravelform.kn](http://www.knatravelform.kn)

 [covid19taskforce@gov.kn](mailto:covid19taskforce@gov.kn)

 1-869-762-0238

In light of the dynamic nature of the COVID-19 pandemic,  
these protocols are likely to change.

Travelers are encouraged to check [www.knatravelforms.kn](http://www.knatravelforms.kn) regularly for updates.