



PREVENTION OF COVID-19 IN SCHOOLS IN ST. KITTS AND NEVIS



GUIDELINES FOR ENTRY AND BEING ON THE SCHOOL COMPOUND



USAID
FROM THE AMERICAN PEOPLE

unicef 
for every child

✱ Everyone arriving at school must wear a mask.





- ✱ Temperatures will be checked using an infrared thermometer.
- ✱ Daily temperatures of staff and students will be noted in a temperature/screening record book.
- ✱ Staff and students who show respiratory symptoms with a high temperature will not be allowed to enter the school compound. They will be advised to return home and obtain medical clearance before returning to school.

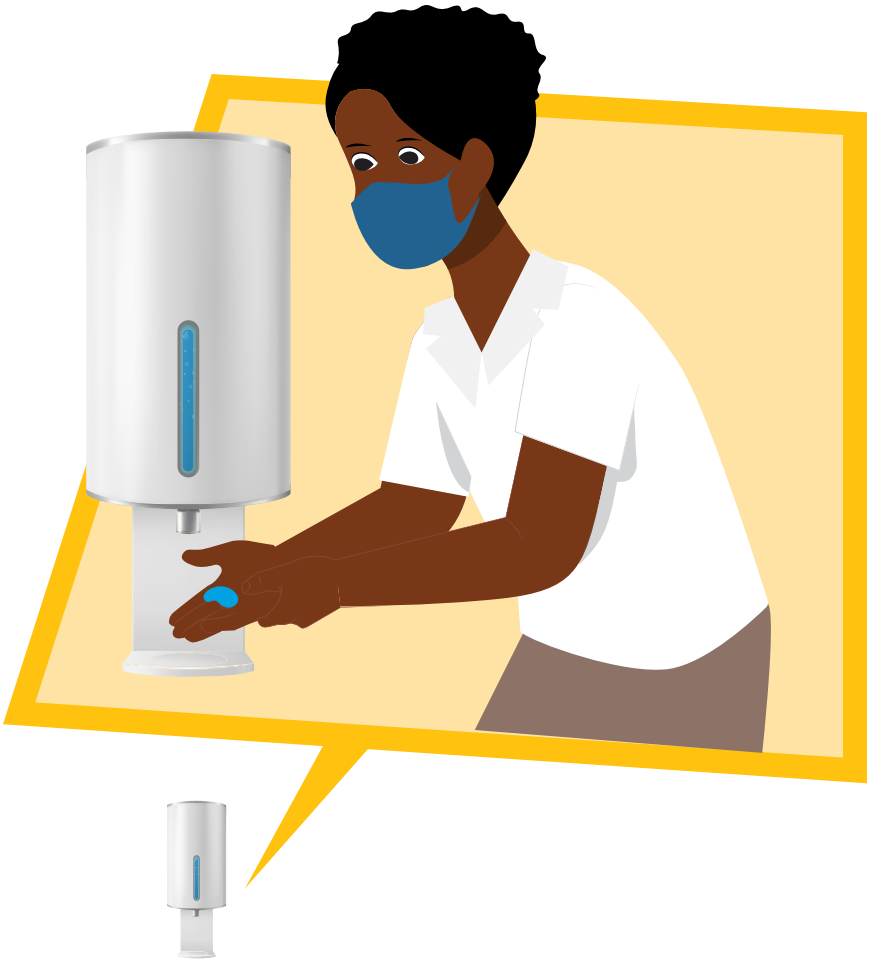
- ✿ If a staff member or student develops flu-like symptoms while on the premises, s/he should be taken to the school 'sick bay'. Parents/caregivers must be called if a student is involved.
- ✿ Parents have one hour in which to collect their child/ward. If they have not responded within the hour, an alternate contact must be sought.



- ✱ Physical distancing floor markers must be placed in busy areas, such as the cafeteria and washrooms.



- ☀ Hand sanitisation stations should be clearly marked.



**PLEASE SANITISE HANDS
ON ENTERING CLASSROOM**



- ✿ Security officers need to ensure that everyone entering the school's compound sanitises their hands.
- ✿ Visitors must observe the school's policy and guidelines that have been put in place.



ST. CHRISTOPHER AND NEVIS
MINISTRY OF EDUCATION

education.gov.kn | moeskn@gov.kn | 1 (869) 467-1402

